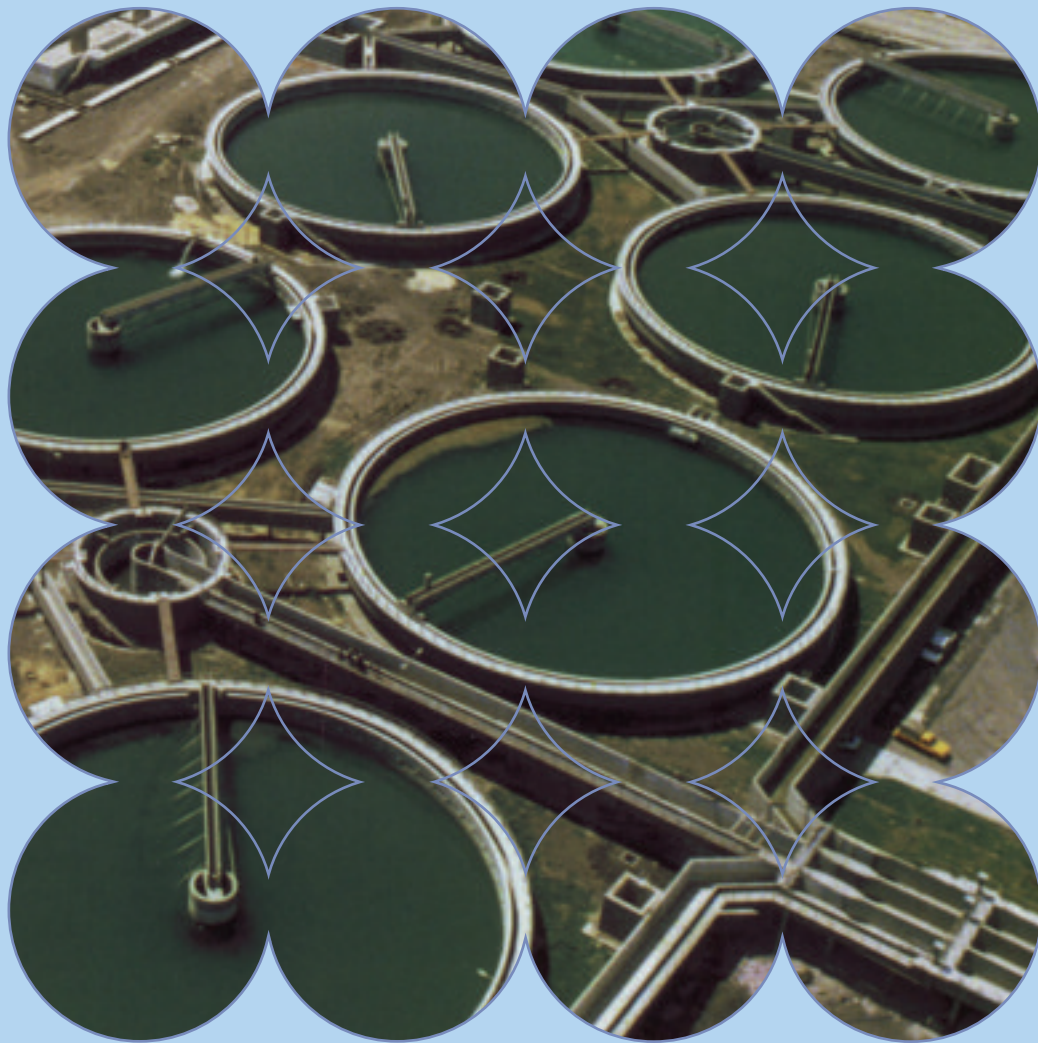


Water Treatment Long life Gear units



RENOLD
Superior Gear Technology

www.renold.com

Renold has been supplying gearboxes to the water industry for over 100 years.

The name Renold is synonymous with high efficiency drives which utilise the latest technology and are designed for a long life with minimum maintenance requirements.

Renold products far exceed the requirements of the industry.

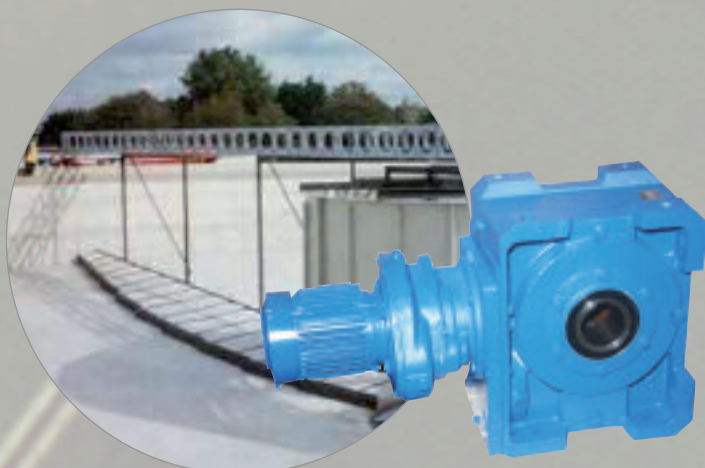


Aerator Drives

Multiple helical HC units are mounted vertically with flange mounted motors. These high speed units drive paddles which rotate on the surface of the water. This agitation puts air into the water, a vital primary process in sewage water treatment.

Mobile Pumps

Mounted on a mobile trailer, the double output shaft WM4" unit is fitted with an off set cranks which drive a diaphragm pump.

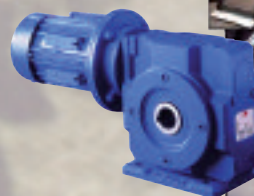
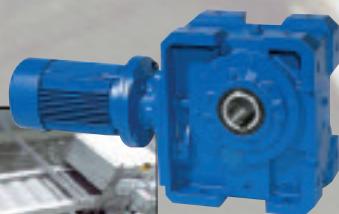
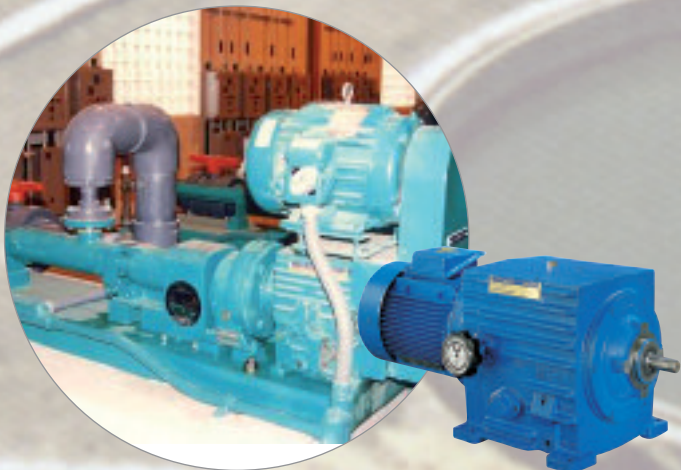


Half Bridge Scrapers

These scrapers are supported in the centre of the tank and are designed to stop sediment settling on the bottom. The scraper arm is driven on the perimeter by PH/Inline geared motor combination drives, geared to run at 1rpm or less. They are very low power, but high torque.

Variable Speed Pump Drives

Carter units with their 27:1 speed range are widely used to drive pumps. The wide variable speed output is ideal when different fluid viscosities are being pumped.



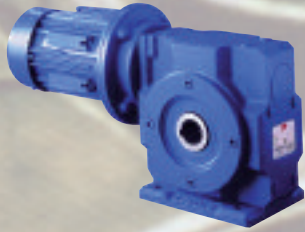
Screen Drives

Two main products use our drives. The 'Stormguard' screen is fitted with a jPM 22 for the brush drive with the main screen being driven, dependant on size, by jPM or WM 3,4 or 5 double reduction units. The 'Escalator' screens are fitted with PM Series PH 4, 5 or 6 units, again dependant on size.

Drum Screen Drives

Double reduction TW wormgear drives are fitted with a spur pinion. Slow turning this pinion drives a slewing ring attached to a large water wheel. The wheel delivers large quantities of water, whilst filtering out large solids such as fish. They are typically employed in power stations delivering large amounts of water.





Muncher Drives

Munchers are two rotating cutters mounted in sewerage pipes. They ensure that no large solid reach the delicate parts of the pump. The cutting heads are rotated by either JPM wormgear or Inline helical gear units.



Fixed Pump Drives

Inline geared motor units mounted on a support baseplate connected to a simple pump drive. These pumps are used to pump fresh water in the water treatment process.



jPM

Wormgear units with sizes from 1.125" to 3.0" centre distance and power capacities up to 6.66kW.

- Available as worm or helical/worm options up to 300:1 ratio.
- Motorised and speed reducer types available.
- Direct mounting of IEC and NEMA motors.
- Variable mounting options allow design flexibility.
- Unique Holroyd tooth form profile for high efficiency and long life.
- Factory filled long life synthetic lubricant.



PM series

This series of gear units is available as a:

- single worm unit - type PW,
- helical/worm unit - type PH,
- helical/bevel/helical unit - type PB.

The range offers the ultimate in versatility and durability with a modern compact design which allows direct mounting of standard IEC and NEMA motors.

Available in 6 sizes with power capacities up to 84kW and gear ratios from 5:1 to 333:1.

- Motorised and speed reducer types available.
- Case design allows variable mounting options - foot, flange and shaft mounting available.
- Long life synthetic lubrication.



Carter gear

Hydrostatic variable speed drive units up to 37kW.

- Proven reliability in hazardous environments.
- Electronic, pneumatic and manual controls allowing design flexibility.
- 27:1 stepless speed range.
- Accurate speed holding.



HC series

State of the art heavy duty helical units using case hardened and ground gears throughout. 16 sizes available with power capacities up to 11,000kW.

- Motorised and speed reducer types for all applications.
- Versatility within the range allows for underdriven and vertical mounting from the same unit.
- Foot, shaft and flange mounted types available.
- Custom made units, designed specifically for customer's applications, are available.
- Available as: single, double, triple and quadruple reduction with ratios up to 500/1.



Gearbox Service and Refurbishment

- Renold undertakes, with the same exacting standards, repair of all makes and types of industrial gearboxes: helical, bevel helical and wormgear.
- Only Renold has instant access to historical records enabling us to save you time and money by quickly identifying and replacing worn out or damaged components. Dedicated internal sales staff ensure a fast and personal service.
- Planned maintenance downtime with pre-manufactured bespoke gearing components.
- Reverse engineering of non Renold components ensures correct specification components are fitted without compromising quality.

AUSTRALIA

Melbourne (Victoria)
Tel + 61 (03) 9262 3333
Fax + 61 (03) 9561 8561
also at: Sydney, Brisbane, Adelaide, Perth,
Newcastle, Wollongong, Townsville.

AUSTRIA

Vienna
Tel + 43 (0) 13303484-0
Fax + 43 (0) 13303484-5
also at: Kiskörös (Hungary), Jaroslavice
(Czech Republic).

BELGIUM

Brussels
Tel + 32 (0) 2 201 1262
Fax + 32 (0) 2 203 2210

CANADA

Brantford (Ontario)
Tel + 1 519 756 6118
Fax + 1 519 756 1767
also at: Montreal.

CHINA

Shanghai
Tel + 21 5046 2696
Fax + 21 5046 2695

DENMARK

Brøndby (Copenhagen)
Tel + 45 43 45 26 11
Fax + 45 43 45 65 92

FRANCE

Seclin
Tel + 33 (0) 320 16 29 29
Fax + 33 (0) 320 16 29 00

GERMANY

Einbeck
Tel + 49 (0) 5562 81163
Fax +49 (0) 5562 81102
also at: Bielefeld, Düsseldorf,
Kornwestheim.

KOREA

Seoul
Tel + 822 783 6829
Fax +822 784 9322

MALAYSIA

Selangor Darul Ehsan
Tel + 60 3-5191 9880
Fax + 60 3-5191 9881
also at: Johor Bharu, Ipoh, Penang.

NETHERLANDS

Amsterdam
Tel + 31 206 146661
Fax + 31 206 146391

NEW ZEALAND

Auckland
Tel + 64 9 828 5018
Fax + 64 9 828 5019
also at: Christchurch.

SINGAPORE

Singapore
Tel + 65 6760 2422
Fax + 65 6760 1507

SOUTH AFRICA

Benoni
Tel + 27 11 747 9500
Fax + 27 11 747 9505
also at: Witbank.

SWEDEN

Brøndby (Copenhagen)
Tel + 45 43 45 26 11
Fax + 45 43 45 65 92

SWITZERLAND

Dübendorf (Zürich)
Tel + 41 (0) 44 824 84 84
Fax + 41 (0) 44 824 84 11
also at: Crissier (Lausanne).

UK

Renold Gears, Rochdale
Tel + 44 (0) 1706 751000
Fax + 44 (0) 1706 751001
e-mail : gears.sales@renold.com

USA

Westfield NY
Tel + 1 716 326 3121
Fax + 1 716 326 6121

WEB

www.renold.com

E-MAIL

e-mail : gears.sales@renold.com

For other country distributors
please contact Renold UK.

RENOLD
Superior Gear Technology

www.renold.com